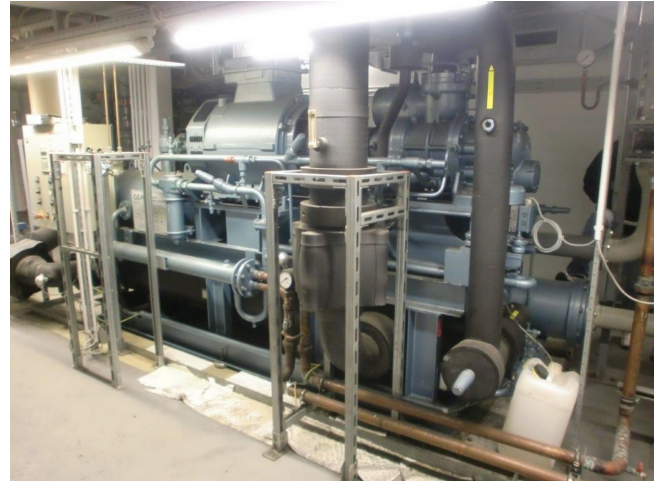


Grasso RR 800

Specifications

Brand	Grasso
Type	RR 800
Product type	Water Cooled Chiller
Capacité kW	798
Capacity Tons	226,9
Réfrigérant	NH 3 (ammonia)
Pump	✓
Weight	5500
Sizes	4000x1400x2100 mm (LxWxH)
Remarks	# // 1x Compressor Grasso N-1 // Electromotor: 200 kW at 2975 RPM
Stock	1



Description

Used Grasso RR 800

Water Cooled Waterchiller Grasso RR 800 with 1 screw compressor Grasso N-1. This used Waterchiller runs on NH3 ammonia. Including control panel, Siemens COROS OP5 simatic panel and Electromotor Schorch KN7315-AB01B (200 kW at 2975 RPM)



